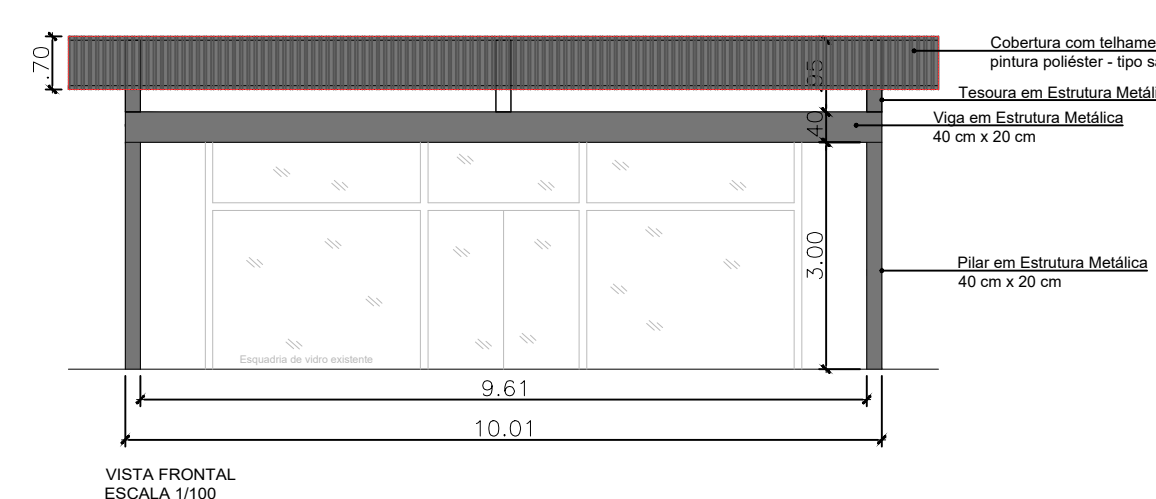
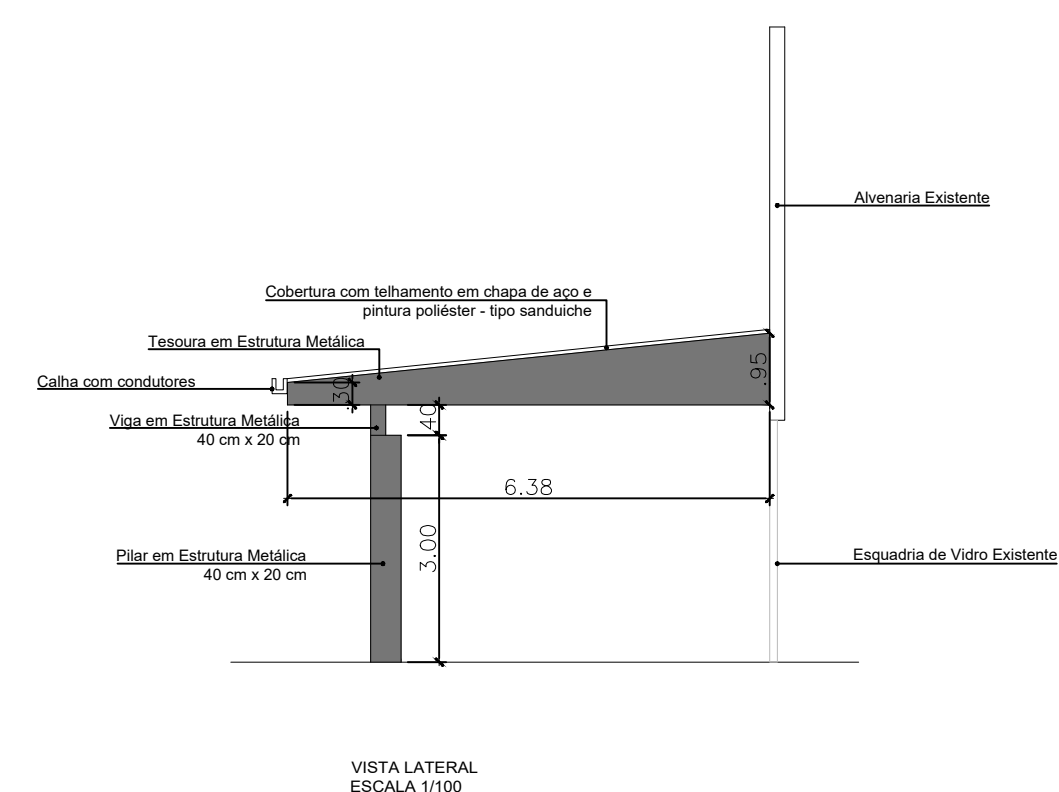


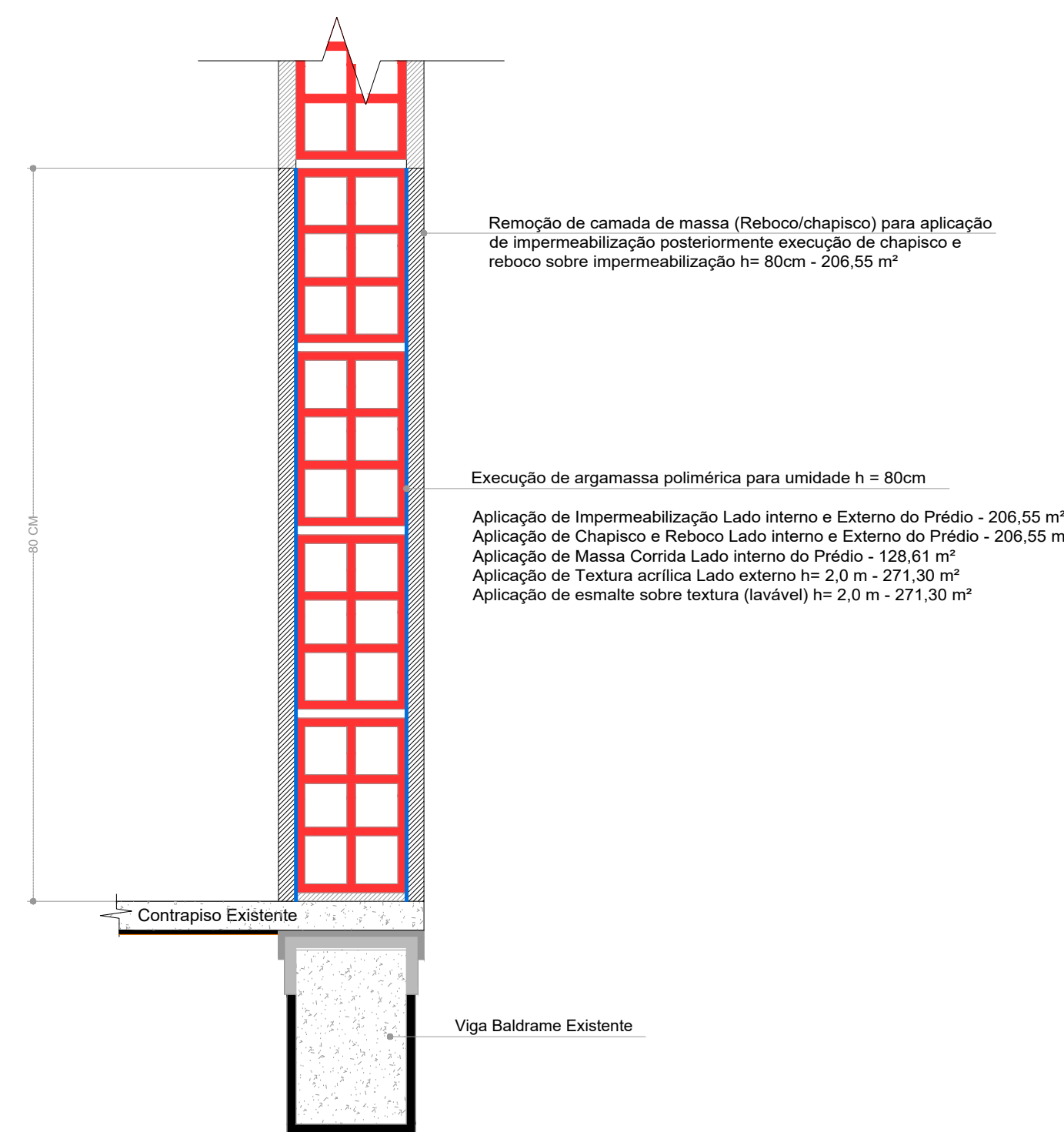
PLANTA BAIXA
ESCALA 1/100



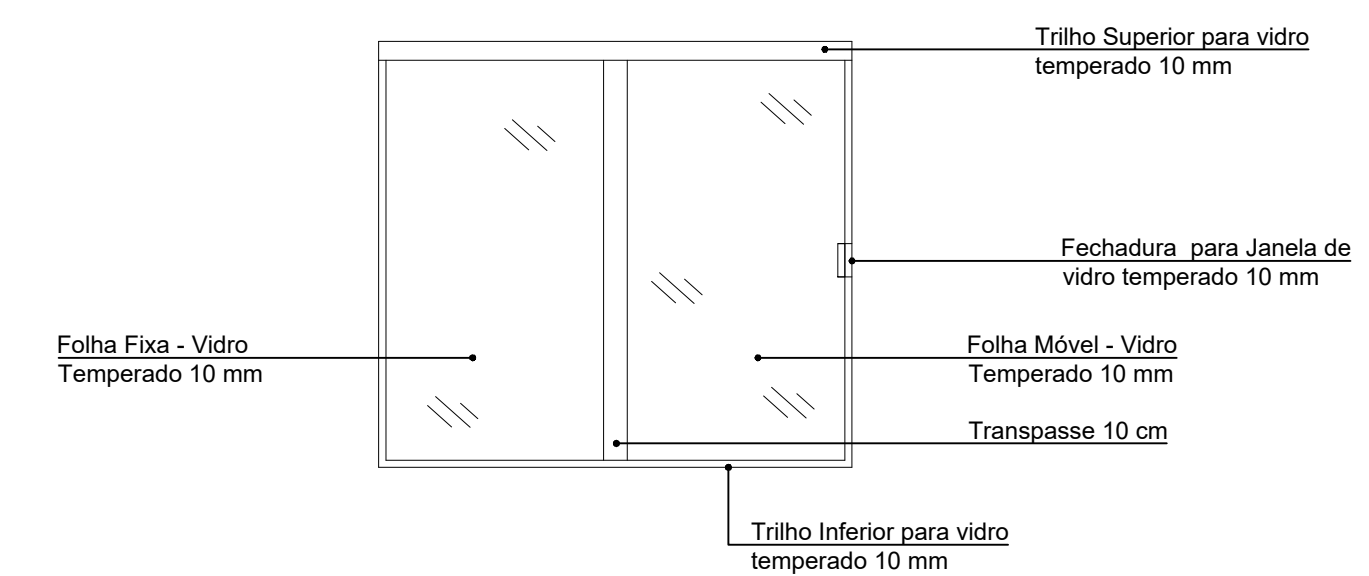
VISTA FRONTAL
ESCALA 1/100



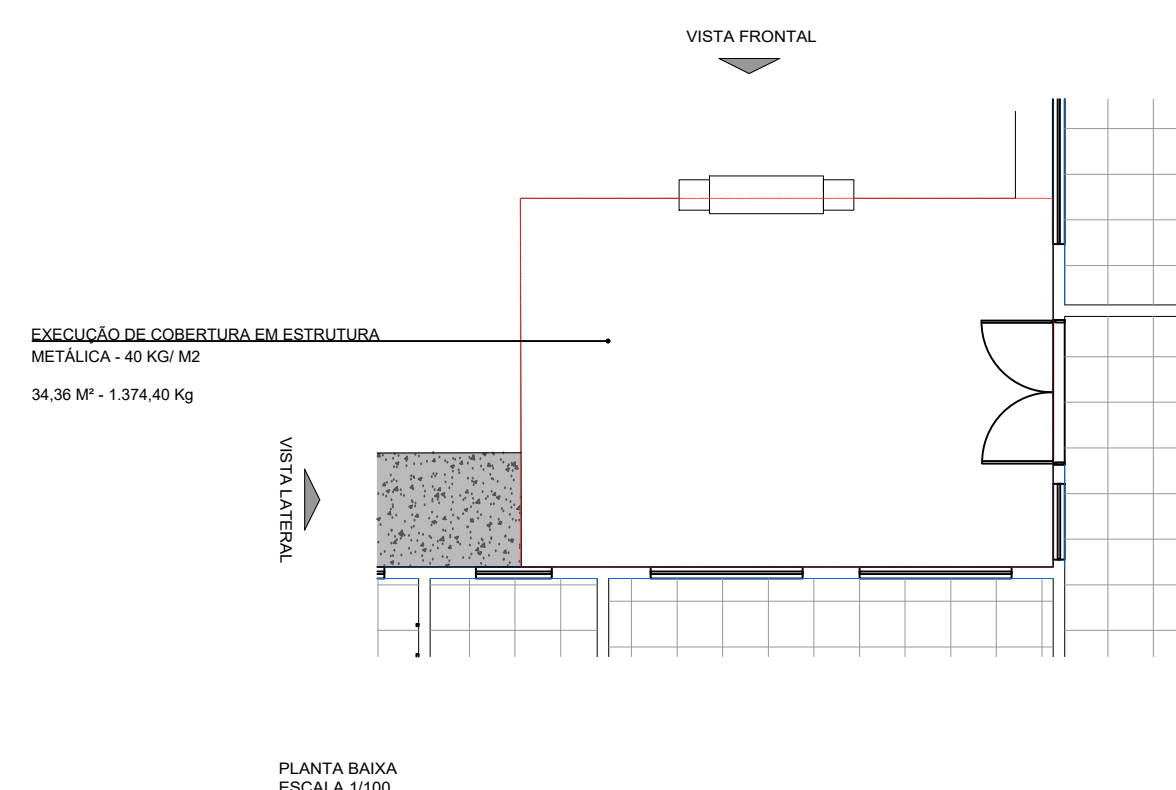
VISTA LATERAL
ESCALA 1/100



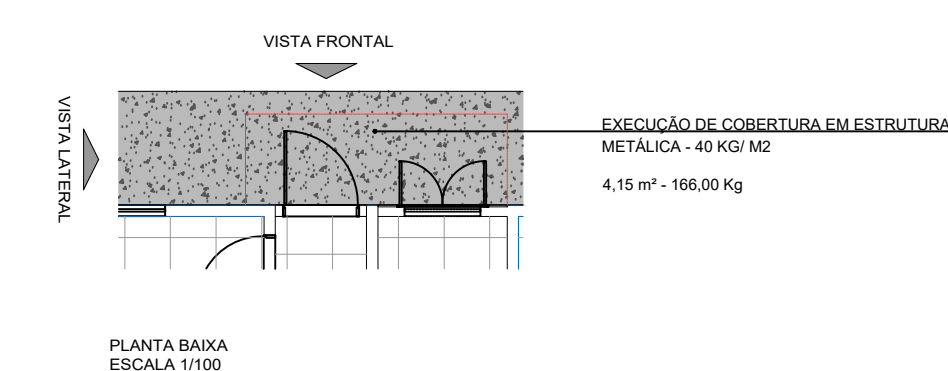
DETALHE 01 - IMPERMEABILIZAÇÃO DE PAREDES INTERNAS E EXTERNAS
S/ Escala



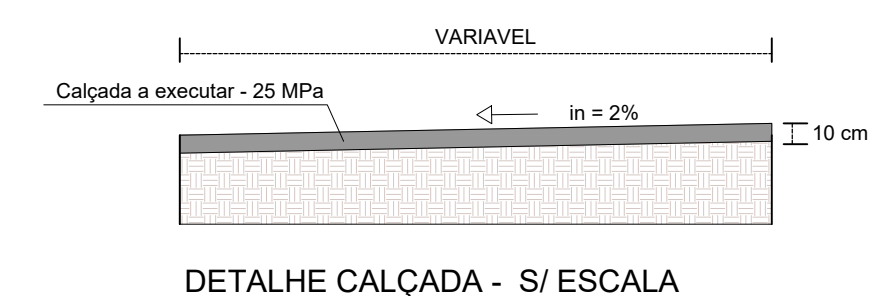
DETALHE 02 - EXECUÇÃO DE JANELA DE VIDRO TEMPERADO
S/ Escala



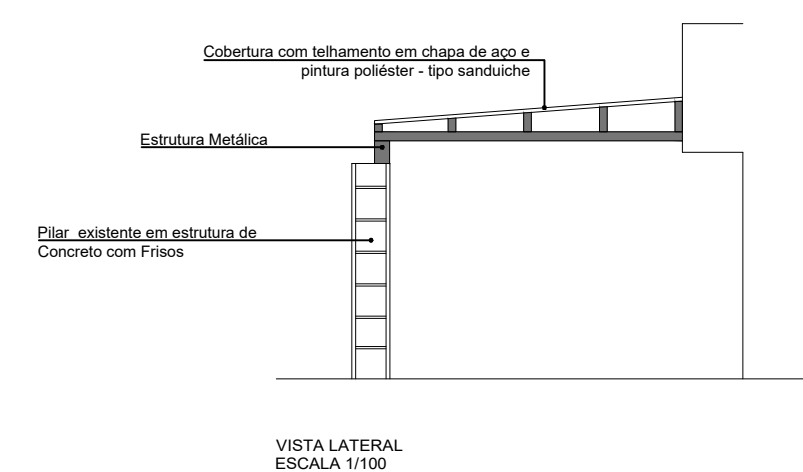
PLANTA BAIXA
ESCALA 1/100



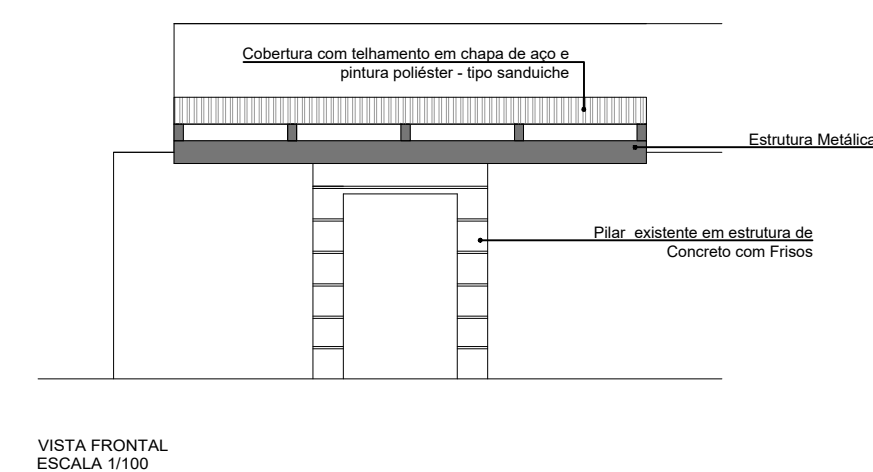
PLANTA BAIXA
ESCALA 1/100



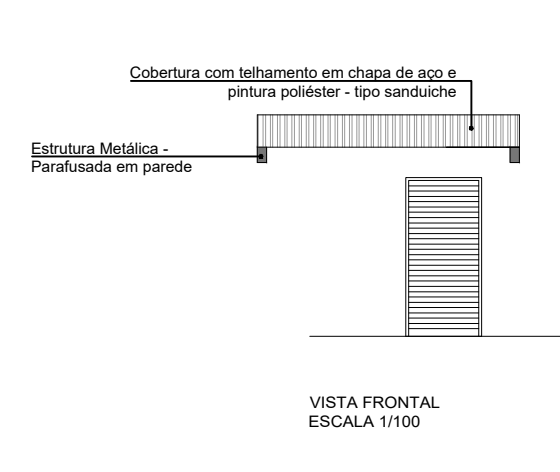
DETALHE CALÇADA - S/ ESCALA



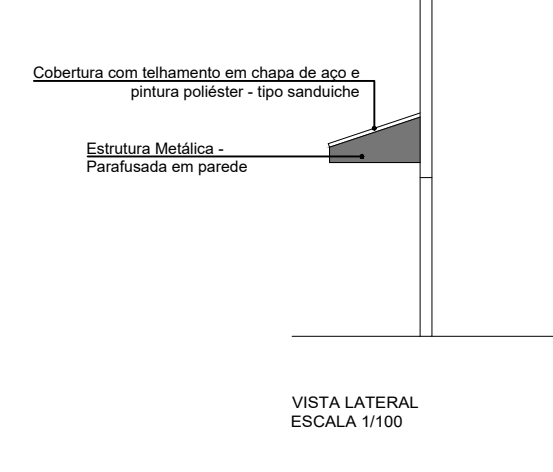
VISTA LATERAL
ESCALA 1/100



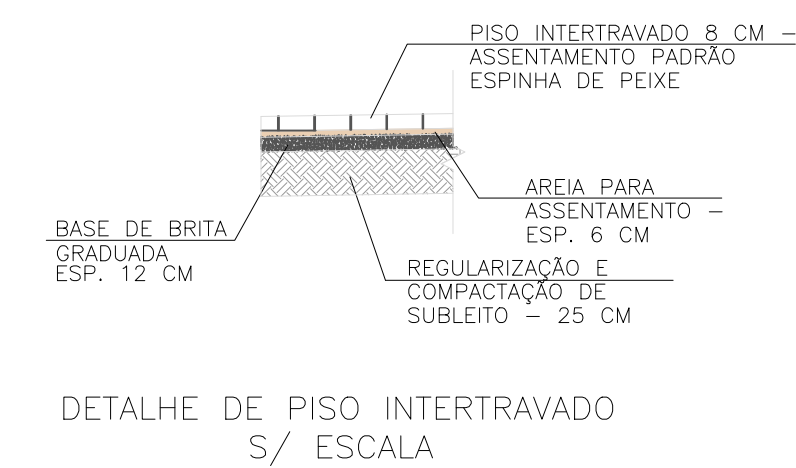
VISTA FRONTAL
ESCALA 1/100



VISTA FRONTAL
ESCALA 1/100



VISTA LATERAL
ESCALA 1/100



DETALHE DE PISO INTERTRAVADO
S/ ESCALA

PROJETO DE REFORMA

FOLHA:
02/02

OBRA: REFORMA DE UNIDADE BASICA DE SAUDE CENTRAL

PLANTA: PLANTA DE DETALHES CONSTRUTIVOS

LOCAL: RUA SÃO FRANCISCO, Nº 625

BAIRRO: CENTRO

MUNICIPIO: CAPELA DO ALTO - SP

PROPRIETÁRIO: PREFEITURA MUNICIPAL DE CAPELA DO ALTO.

SITUAÇÃO SEM ESCALA

DECLARO QUE A APROVAÇÃO DO PROJETO NÃO IMPLICA NO RECONHECIMENTO POR PARTE DA PREFEITURA DO DIREITO DE PROPRIEDADE DO TERRENO

FOLHA DE LOCALIZAÇÃO

PREFEITO MUNICIPAL
PERICLES GONÇALVES

AUTOR DO PROJETO
LUCAS GODDY DE FREITAS FERREIRA
ENGENHEIRO CIVIL
CREASP - 5070995851